



TEMPLE BETH EL

# shofar

SEPTEMBER-OCTOBER 2011  
ELUL 5771-CHESHVAN 5772

## A GOOD NEW YEAR

Last year, it occurred to me that on December 31st, we wish everyone a 'happy new year,' and at Rosh Hashanah we say, "shanah tova, have a good new year!" Since then, I have wondered about these two greetings. Are there differences between "happiness" and "good-ness?" If not, then why don't we offer the same wish for the Jewish new year? And, if there are differences, what might they be, and what might we learn from them?

So what is 'happiness?' The dictionary suggests words like feeling pleasure; feeling satisfied, pleased, cheerful, or contented. But how do we achieve a feeling of happiness, and how long can it last? When are we contented or satisfied? It seems to me that these are usually fleeting moments. I can think of very few people who are always "happy." If we get everything we want and get rid of everything we don't want, will we achieve happiness? Scientists today who study happiness are finding that people who (seemingly) have everything they want — wealth, status, material possessions — are no happier than those who are lacking. Growing up, I used to have a poster that had the Peanuts character, Linus (I think), sucking his thumb and holding his beloved blanket. Cuddled up next to him was the beagle, Snoopy. The caption read, "Happiness is...a warm puppy." Love, security, and peace certainly can bring happiness. But at some point, something will change. Is that the end of happiness? What about experiences that make us happy, but make others unhappy, like that moment of pleasure when we can talk about others with our friends. And what about things that make us momentarily happy, such as chocolate and/or wine? .

On the other hand, what is 'good?' The dictionary suggests synonyms such

as, "high quality, skilled, virtuous, kind, valid, genuine, decent, moral, and upright." It seems to me that these are core values by which we strive to live. In fact, it is by practicing these values that we arrive at 'happiness!' If we are decent, moral, genuine people, I suspect that the happiness we find will be deep and lasting. We might not always be joyous; in fact if we live an ethical, morally sound life, we will feel the deep despair in the world, and we will work to repair what is broken.

'Goodness,' I am sure, leads to 'happiness.' Being happy is not the goal, rather it is leading a good, purposeful, and meaningful life that leads to contentment.

The month before the High Holidays (Elul) through the festival of Sukkot is a time for us to examine our lives. Perhaps one way is to ask ourselves if we are really happy. If we are, what makes us happy? Have we hurt or offended others — or the earth — to get there? Have we tried to

extend our happiness to others? Have we expressed gratitude for our happiness? And if, at our core, we are not happy, why is that? What messages have we received during our lifetime that might contribute to our unhappiness? I recently heard a talk by Dr. Willoughby Britton, a neuroscientist at the Medical School at Brown University. It turns out (although I think we all knew this) that through repetition, our brain gets locked into patterns that we have to work hard to change. In weightlifting, I practice certain moves to make the lifts easier, efficient and automatic. I try to implant the pattern in my muscles. After a while, it becomes difficult to lift in any other way. The same is true about our mental habits. Our brains become used to patterns of thinking. Too often we fall into the pattern of negativity and critical judgment — of ourselves and of others. What can we do to change the pattern? According to modern science, we have to practice! We have to

see *Rabbi* page 6

## Annual Appeal 2011

Temple Beth El's Annual Appeal campaign is about to swing into high gear. We embark on an Annual Appeal as a necessary step to ensure that our congregation can sustain a vibrant spiritual and programmatic life, while never turning away a congregant or family for financial reasons. The importance of our Annual Appeal simply cannot be overstated as we rely on congregants from a wide range of backgrounds and means coming together to embrace a shared vision.

This year we have extended the timeframe of the Annual Appeal and set a goal to raise \$50,000, and reach 100% participation. This year, contributions will be recognized in a variety of ways and you will be able to donate at various levels. Your gifts, whether at the High Holidays or through other events throughout the year, will be added together to represent your total level of giving. On November 20th a Phone-a-Thon will be held in an effort to reach a majority of members. Adults will be invited to attend a Wine Tasting & Mirror Ball Dance on February 4th, while our children can look forward to an Ice-Cream Social on April 29th. Thank you in advance for your on-going support.

Every contribution will make a difference!

## ANNIVERSARIES

### AUGUST:

- 1 Armand Lucier and Rachelle Mack
- 2 Dan and Judy Gatchell
- 5 Mark and May Crasnick
- 7 Neil and Phyl Rubinstein
- 7 Arthur and Judi Slotsky
- 11 Jim and Faith Elowitch
- 15 Paul and Susan Korobkin
- 16 Dick and Adele Aronson
- 16 Fred and Karen Farber
- 16 George and Nancy Marcus
- 16 Richard and Nadine Weinberg
- 17 Kelley and Shari Brinkman-Young
- 17 Leonard and Anne Kovit
- 17 Jon and Susan Young
- 18 Neal and Lorry Stillman
- 19 Douglas and Gail Volk
- 20 Gil and Barbara Dichter
- 20 Jerry and Susan Goldberg
- 22 Joy Krinsky and David Kemmerer
- 23 Sam and Bette Novick
- 23 Elliott Wincele and Olivia Solodar
- 25 Michael and Barbara Peisner
- 27 Mark and Kathy Aranson
- 27 Geoff and Karen Hindall
- 28 Frederick and Jenny Aronson
- 29 Robert Levine and Vilean Taggersell
- 31 Geoffrey and Harriet Rice

### SEPTEMBER:

- 1 Jay and Kim Baker
- 1 Carla Marcus and Larry Mohr
- 2 Robert and Jean Aranson
- 2 David and Betty Small
- 3 Russ and Bea Bornstein
- 3 Ray and JoAnn Oransky
- 5 David and Gina Elowitch
- 5 Jerry and Susan Fine
- 6 Bernie and Phyllis Givertz
- 7 Jeffery and Susie Saffer
- 18 Joan and Jeffrey Barkin
- 20 Eric and Dani Kolben
- 23 Lenny and Patti Drapeau
- 29 David and KC Stone

### OCTOBER:

- 5 Ken and Susan Silver
- 7 Ben and Judy Bertram
- 10 Stephen and Melissa Finberg
- 10 Colin and Kate Foye
- 10 Paul and Julie Greene
- 10 Mark Kelly and Emma Schiffman Kelly
- 11 Seth Rigoletti and Gillian Schair
- 22 Maurice and Phyllis Cohen
- 22 Paul and Susan Trusiani
- 23 Abe and Tama Fineberg
- 23 Gregg and Pattie Garson
- 25 Stuart and Laura Piltch
- 25 Stephen and Susan Schwartz



## TEMPLE BETH EL

*"Our vision is to be an embracing, supportive and vibrant community which observes Judaism in the Conservative tradition and which is devoted to the perpetuation of Jewish values and culture. Temple Beth El honors the diversity of its members and is committed to their spiritual growth."*

## SCHEDULE OF SERVICES

Congregants are encouraged to make regular attendance at Temple Beth El a part of their lives.

### DAILY SERVICES

Monday through Friday . . . . . 6:50 am  
 Friday Evening Services . . . . . 5:30 pm  
 Saturday and Jewish Holidays . . . . . 9:30 am  
 Sunday . . . . . 9:00 am  
 Secular Holidays . . . . . 8:30 am

*"Do not separate yourself from the congregation."*

—Hillel, Pirkei Avot, 2:5

Rabbi . . . . . Carolyn Braun  
 Director of Congregational Learning . . . . . Dov Goldberg  
 Administrative Director . . . . . Jodi Veysey  
 Administrative Assistants . . . . . Anne-Marie  
 . . . . . Jeannine Poulin  
 Communications Coordinator . . . . . Deena Schoenfeld  
 Bookkeeper . . . . . Sherri Quint  
 Custodian . . . . . Bob Bradbury  
 Kitchen Manager . . . . . Gardner Seekins  
 Rabbi Emeritus . . . . . Harry Z. Sky, D.D.  
 Cantor Emeritus . . . . . Kurt Messerschmidt

### Officers

President . . . . . Judy Gatchell  
 Vice President . . . . . Irwin Gratz  
 Vice President . . . . . Joan Levy  
 Treasurer . . . . . Jon Brier  
 Secretary . . . . . Fae Silverman

### Executive Committee

Officers: Jon Brier, Judy Gatchell, Irwin Gratz, Joan Levy  
 Immediate Past President: Rick Finberg  
 At large: Irwin Gratz, Judy Wilson  
 Ex officio: Rabbi Carolyn Braun, Jodi Veysey

### Temple Beth El Board of Directors

Adam Arens Joan Levy  
 Jon Brier Paul Muscat  
 Becky DeLois Andrew Shur  
 Barbara Dichter Fae Silverman  
 Kate Foye Virginia  
 Judy Gatchell Squires-Eklund  
 Irwin Gratz  
 Joy Krinsky

### Shofar

Joy Krinsky, Production Editor



Temple Beth El is a member of the United Synagogue of Conservative Judaism.



Funding for Temple Beth El Religious School has been generously provided by the Jewish Community Alliance of Southern Maine, through its Annual Campaign.

# BEING WHO I THINK I AM

**A**s I write this I am away attending the NewCAJE Jewish educators Conference in Greensboro, North Carolina on the campus of the American Hebrew Academy (AHA). There are many exciting and worthwhile professional sessions. The

evening programs are always a lot of fun. But, for me the high point of the conference is always the people. It is hard to sit in the cafeteria and see hundreds of committed Jewish educational professionals from all streams of Judaism and not become invigorated. On a more personal note I saw several friends of whom I had lost track. This is always true, but particularly true this year because I spent 5 years as a Dean, teacher, and houseparent at AHA. It was simply marvelous catching up on what they were up to and what had happened in their lives. Simply, finding out who they are. I knew who they were, now I was discovering how that related to who they have become. And I know that their view of me was the same, just coming from the other side.

I'm the same as I've always been - maybe a little heavier, a little grayer, a little balder. (O.K., maybe a lot of those things.) Really? Am I really the same as I've always been? I do know that my opinions have "evolved" on some issues. But, my fundamental values and inner

core are still the same - right? The more I think about this question the more I start thinking about the coming Rosh Hashanah and Yom Kippur. The real issue is who I am as a person. Have my values changed?

And, if they haven't, have I gotten any better at putting them

into practice. I recall reading a paper which was delivered over 20 years ago by social psychologist Mark Snyder at a conference at the University of Waterloo. It was called "When Believing Means Doing: Creating Links Between Attitudes and Behavior." We like to think that what we do is directly driven by what we believe. But, psychologists have long known that often this isn't true. There are a lot of factors which influence what we do and the behavior patterns we establish. This paper explored many of these issues. We often find ourselves rationalizing when we notice that our behavior doesn't conform to our presumed views. Most of the time we just don't notice. Most of the time we live our lives unaware of how tenuous the real relationship is between our private attitudes and public actions.

The real introspective Rosh Hashanah/Yom Kippur issues are not usually about holding the right values, they're about more consciously putting those values into everyday living. Traditional Jewish practice is largely a

system to encourage the incorporation of Jewish values into our daily actions. Inconsistency between our attitudes and actions isn't hypocrisy, it's being human. Hypocrisy is not trying to find ways to link our attitudes and behavior. This is a worthy struggle for us all year long, but, especially around the high holidays. Fundamentally, it requires being more aware of what we do and monitoring those actions without personal apologetics. It requires making more of an attempt to consciously see that our doings match our believings. In the Hebrew School we spend a lot of time learning about Jewish values and trying to help the students explore what it means to live according to our values such as giving Tzedakah, refraining from Lashon Harah (harmful speech), and much much more. The challenge to actually conform our actions to our professed beliefs is also a struggle worth showing humbly to our family and friends. Seeing someone else make the effort may be just what I need to make me give a second thought to the way I go about my day. It takes effort, an effort I hope I've engaged in some, though surely not enough. I'd like to think that my old friends saw me as the person they used to know, just a little more so.

**BY DOV GOLDBERG  
DIRECTOR OF  
CONGREGATIONAL LEARNING**

## Belonging to Brotherhood

Being a part of TBE Brotherhood is more than just a small donation towards dues, it's about being a part of a dedicated group of men and women who are committed to providing a daily Sunday-Friday service so that there will be a minyan for those saying kaddish, or for those who just want to attend our early morning prayer service. This year, we awarded a college scholarship of \$1000 to a high school student who committed to attend one day a week for one year.

We also had several guest speakers and many interesting divar torahs. Morning Minyan is a unique intimate setting that invokes communion with each other as we worship together. It is a great way to start the day and we need to continue the tradition, which

## TIKKUN OLAM NEWS BY BARBARA PEISNER

### COLLECTIONS FOR PREBLE STREET AND WAYSIDE FOOD RESCUE

We are continuing to collect new white socks, towels, and personal care items, such as soap, toothpaste, toothbrushes, shampoo, etc. during the summer months. Please also drop off food donations for the Wayside Food Rescue Program. The food pantries are in great need of food during summer months when children are home from school.

We are continuing to prepare meals and serve at the Preble Street on

the 4th Thursday of each month. In addition, based on responses from a recent survey from this committee, we will also be participating in Tuesday Family Dinners at The Parkside Neighborhood Center on the corner of Grant and Mellen Streets. The meal is served from 5:15-6:15pm. The meal is followed by an activity for children, which volunteers are also welcome to help with or lead. If you are interested in volunteering for either of these activities, please call Carolyn Turcio-Gilman (899-0695) or e-mail (cturciogilman@yahoo.com).

see **Brotherhood** page 7



## MICHAELA PARATORE

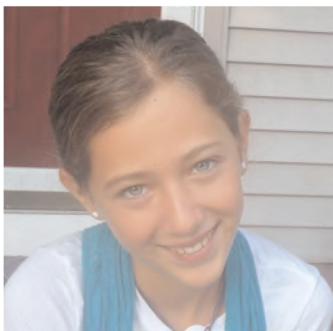


Thank you for joining Elaine Kerachsky and Tony Paratore in celebrating the Bat Mitzvah of their daughter, Michaela Paratore, on August 27, 2011.

Michaela will be an eighth grader at Falmouth Middle School. She has played trumpet in the school band. She also has been in the chorus, Gold Chorus, the Treble Choir, and was selected for District II chorus last year. In addition, she has been on the school's cross-country team and has participated in drama presentations. Michaela also enjoys baking.

We would like to thank the Rabbi, Dov, Ellie Miller, and Michaela's teachers for helping us to prepare her for her Bat Mitzvah.

## HANNAH CLAIRE BRIER



Please join Amy and Jon Brier in celebrating the Bat Mitzvah of their daughter, Hannah, on October 28–29, 2011.

Hannah Claire Brier is an honor student at Memorial Middle School in South Portland, Maine. She enjoys acting and has been in various performances at her school. She is also a member of the school chorus and has been selected to be in the honors chorus for 2 years. She plays the clarinet in the school band as well.

In Hannah's free time she enjoys spending time with her family and friends and looks forward to spending her 5th summer at Center Day Camp.

## REMEMBER WHY WE DO THIS...

**W**e come to TBE to celebrate the New Year with a mixture of emotions and with needs that are unique to each of us. We are grateful for so much over the past year. We look forward to seeing friends, to being with family. We have traditions that have been shared over the years with family and friends and will begin some new traditions this year. We may have some anxiety over what the new year will bring for us and those about whom we care most, about what is happening around us – nationally and locally. For me, as with so many of you, this is a time of family and community.

For the past several years my High Holy Day celebration has been mixed with my responsibilities at TBE. I am privileged to once again this year serve as your president. I am honored to have a leadership team that is dedicated to TBE and represents the diversity of our congregation. As we continue to evolve as a community in the 21st century, we acknowledge the demands on our time that often make it difficult for many of us to commit to volunteering. I want to stress that any amount of time – however small it may seem, contributes to the vitality of TBE and, dare I say, will contribute to the quality of your life, too.

This year's TBE Board met for the first time in June. We have made some changes. First we have appointed a "chair of the Board" who will communicate agendas and Board activities and will facilitate Board meetings. I am excited to have Irwin Gratz in that position. This allows me to focus energy on the many other tasks of a president and allows us to use the strengths of our Board members to the best advantage. We have a new secretary this year, Fae Silverman, who brings youth, enthusiasm, commitment to the Portland Jewish community and a desire to contribute to the leadership of TBE. Fae has begun a practice – using Dr Erica Brown's book *Inspired Jewish Leadership* – to open our Board meet-

ings with each member answering a relevant question. The first question "Why did you join the TBE Board?" revealed the commitment and diversity of our Board. I want to share some of the responses.

**BY JUDY GATCHELL  
PRESIDENT**

"I was asked." "It's a good way to get involved, support things, contribute, have a voice." "What we do for ourselves and family is as important as what we do for the community." "I was honored to be asked." "We came here [to TBE] before we came to Portland because it was important for us to be active members of a synagogue. If TBE was not here, we would not be either." "Great way to give back and be involved with the Jewish community."

There is no doubt that these are challenging times. As many as 15% of families in Maine do not know where their next meal is coming from. There is job insecurity, war on several fronts, education reform, continuing conflicts in Israel, national and state budget shortfalls, and so much more that we hear on a daily basis. Although the members of our congregation are not immune to the downsides of the economy and the many worries we have as Jews and as citizens of the world, we have been working to sustain the quality of our offerings. This year our Board will continue to focus on leadership development and continued financial stability for TBE. In order to be able to make membership accessible to all, and offer the community the kind of programs to which we are accustomed, our Board has decided upon an aggressive fundraising plan that includes fundraising beyond our own membership. Regarding leadership, the Board is discussing "out of the box" models in order to make it possible for more people to participate, and therefore have more diverse representation from our membership. In addition to fulfilling our financial commitments, we are looking at ways for our members to feel fulfilled spiritually. Our lay leadership and our

see *Why* page 6

## MAZEL TOV

To the winners of TBE's Maine Jewish Film Festival Ticket Raffle:

Tom Berman (an All Festival Pass), Patty Weber (two tickets to the Opening Night Party & Film Nora's Will), Becky DeLois (two tickets to the film Simon Konianski), Rabbi Braun (a ticket to The Klezmatics) and to Annette Elowitch for being the first caller to win the remaining Klezmatics ticket.

To Jacob Haas, son of Mickey and Sheryl Haas, on the occasion of his Bar Mitzvah.

To the following people for correctly guessing the TBE mystery photo/trivia contest in the weekly emails and on the TBE facebook page: Emma Hindall, Debbie Kanter, Rachelle Mack, Andrea Levinsky, Janine Collins, Paul Abramowitz, and Lynn Goldfarb.

To Desi Isaacson, son of Rick Isaacson and Danika Kuhl, on the occasion of his Bar Mitzvah.

To Dov Goldberg, Director of Congregational Learning, on his son Amiel's graduation from the University of North Carolina, Greensboro, on May 6, with two Bachelor's degrees - one in philosophy and one in psychology.

To Drew Abramson on the occasion of his Bar Mitzvah.

To Isaac Finberg, son of Stephen and Melissa Finberg, on the occasion of his Bar Mitzvah.

To Dov Goldberg, Director of Congregational Learning, on his marriage to Danielle Romanoff, on June 20.

To Emma Hindall on the occasion of her Bat Mitzvah.

To Benjamin Freedman on the occasion of his Bar Mitzvah.

To Harrison Pearl on the occasion of his Bar Mitzvah.

To Myron & Ilene Berman, on the birth of their grandson, Benjamin William Berman, on June 7, in New Hampshire. Benjamin's parents are Myron's son, Aaron, daughter-in-law, Suzy, (and big Sister Cara!) and he is the grandnephew of Tom & Margie Berman and Shelly & Mark Chorney.

To Ken and Nancy Levinsky on the Bar Mitzvah of their son Gregory on June 11 at Congregation Bet Ha'am. Greg is the grandson of Morris and Adele Silverman and Philip and Elizabeth Levinsky.

To Andrea Levinsky for being the winner of the first scholarship given by TBE brotherhood for attending one morning Minyan each week. Andrea is the daughter of Ken and Nancy Levinsky and the granddaughter of Morris and Adele

Silverman and Philip and Elizabeth Levinsky. Andrea is a graduate of Deering High School.

Mazel Tov to the winners of the TBE raffle: Steve Gleit won the Kindle Reader, Jon Brier won the Maine Float Rope Downeast Doormat, Joy Krinsky and Steve Gleit each won a custom TBE Mousepad!

To Emily and Stanley Chaleff on the birth of their son, Gideon Noah Chaleff, on June 22, in Portland.

To Dov Goldberg on the marriage of his son, Amiel Goldberg, to Rebecca Gedalius, on August 28.

To Sam & Bette Novick on the birth of their grandson and Rose Novick on the birth of her great-grandson, Martin, Phiroz Novick, born to Andrew and Sabrina Novick on August 1.

## College Graduates

Jodi Freedman, nursing school and passed the Boards to become a registered nurse

Lauren Kanter, Masters Degree in Teaching from Manhattanville College in Purchase, New York

Rachel Aranson, B.A. in Psychology from the University of Maryland in College Park

Natalie S. Cohen, University of Maine at Orono, magna cum laude, phi beta kappa, broadcast journalism and communications major, child and family relations minor

Ruth Hala Asch, Mount Holyoke College, double major in biological science and psychology, with high honors as a Mary Lyon Scholar in biological sciences

Bob Gordon, Graduate Student Award for Distinguished Achievement, earning his Master of Public Health degree from San Francisco State University

## High School Graduates

Alana Becker, Falmouth High School

Samantha Levy, Falmouth High School

Arianna Weber, Falmouth High School

Andrea Levinsky, Deering High School, attending Connecticut College, New London, CT

Olivia Byer, Churchill High School Potomac MD granddaughter of Matt and Lynn Goldfarb

Robert Brown, Deering High School

Marc Korobkin, Valedictorian & Brown Medal Winner, National Honor Society, Portland High School

Jeffrey Peisner, Brown Medal Winner, National Honor Society, Portland High School

Leonard Schwartz, National Honor Society, Portland High School

Serena Adlerstein, National Honor Society, Portland High School

## WELCOME NEW MEMBERS

Alisha Goldblatt & Zachary Heiden and their children Anya, 3, and Zev, 1, of Portland

Patricia Finklestein of Scarborough  
Justin and Rachel Alford of Portland

## WE MOURN THE PASSING OF:

Sarah Weinstein, on April 25, in Florida

Roberta P. Cavanaugh, mother of Aileen Tabachnick, mother-in-law of Robert Tabachnick, and grandmother of Jacob, Abe and Elijah, April 19, in Portland

Harvey Weinstein, brother of Jeff Weinstein and Elaine Cohen, son of Sarah, on May 3, in Portland.

Sally Lourie Sneider, mother of Ava Bradley and Mark Lourie, on May 12, in Portland.

Tina H. Fineberg, wife of Louis, mother of Fraya and Lois, on June 3, in Portland.

Dayna Kucine, cousin of Cliff, Barbara, Sydney, Kody, Jacob and Jackie Kucine, on June 5, in New York.

Patricia Kanter, sister-in-law of Barbara Peisner, on June 9, in Philadelphia.

Lillian Rapoport Silverman, on June 20, in Portland.

Adeline Teich, aunt of Lisa Arens, on June 21, in Hallandale Beach, Florida.

Joseph Chandler, on July 2, in Portland. husband of Marjorie, father of Karen Chandler and her husband Philip Vince; Michael Chandler and his wife Sheila; Barry Chandler and his wife Diane; and many grandchildren and great grandchildren.

Marilyn Wolpert, stepmother of Judy Wilson, on July 5, in Delary Beach, Florida.

Joseph Richards, grandfather of Sarah Darhower, on July 22, in Ohio.

## TODAH RABAH

To the TBE Sisterhood for generously providing Siddurim for our 2nd grade Hebrew School students, in recognition of the students learning to read Hebrew.

To Mickey and Sheryl Haas for sponsoring the special Oneg Shabbat on Friday night, April 8, in honor of their son Jacob's Bar Mitzvah.

To members of the TBE community who welcomed Pastor Lynn Briggs and her students from the Buxton United Methodist Church when they attended Shabbat services at TBE on Friday, April 15.

To Gil & Barbara Dichter for the donation of an iMac G5 computer for Temple use.

To members of the TBE community who took the time to speak with the USM Religion and Honor students following morning Minyan on Sunday, April 10.

To our volunteers whose dedication and hard work made this year's second night Passover Seder possible: Paul Muscat, Hedy Cohen, Judy Gatchell, Debbie Kanter, Judy Wilson, Irwin and Eli Gratz, Steve Gleit, Terry Veysey, Clara Purinton, Janine Collins, Jennifer Read, TBE staff: Jodi Veysey, Sherri Quint, Bob Bradbury, Gardner Seekins, and a big thank you everyone who pitched in to clean up following the dinner!

To Clara Purinton and Hedy Cohen for preparing the Shofar newsletter mailing.

To Rick Isaacson and Danika Kuhl for sponsoring the special Oneg Shabbat on Friday night, May 6, in honor of their son Desi's Bar Mitzvah.

To our Jewish community partners for co-sponsoring the Community Yom Ha'atzmaut Israel Independence Day Celebration. Also To Rabbi Braun for leading the Yom Hazikaron (Israel Memorial Day) remembrance during the event, to TBE Communications guru Deena Schoenfeld for leading the Israeli dancing, and to our bookkeeper Sherri Quint for the delicious custom Israeli flag cake she created for the event.

To Joan & Larry Levy for co-sponsoring the Oneg Shabbat on Friday, May 13, in memory of Joan's father, Irving Remar.

To David and Lynn Abramson for co-sponsoring the Oneg Friday, May 13, in honor of their son Drew's Bar Mitzvah.

To Nancy Finberg for sponsoring the Oneg Shabbat on Friday, May 20, in honor of her grandson Isaac Finberg's Bar Mitzvah and in memory of her grandson Ezra Finberg.

To Geoff and Karen Hindall for sponsoring the Oneg Shabbat on Friday night June 3, in honor of their daughter Emma's Bat Mitzvah.

To Jonathan and Jodi Freedman for sponsoring the Oneg Shabbat on Friday night June 10, in honor of their son Benjamin's Bar Mitzvah.

To Dan and Judy Gatchell, Greg Garson and Terry Veysey for kicking off our rainy TBE Landscaping Day.

To Jodi Spiegel Pearl and Daniel Pearl & Robin Henry-Pearl for co-sponsoring the Oneg Shabbat on Friday night June 17, in honor of their son Harrison's Bar Mitzvah.

To Joan & Larry Levy for co-sponsoring the Oneg Shabbat on Friday, June 17, in memory of Joan's grandmother, Mollie Kayden Remar.

To all who helped volunteer for the TBE Open House and Family Fun Day: Andy Shur, Irwin Gratz, Joan Levy, Kate Foye, Carolyn Turcio-Gilman, Becky Delois, Laura Piltch, Judy Gatchell, Cliff Kucine, Jon Brier, Talia Timmins, Judy Wilson, Joy Krinsky, Karen, Gregg, Zach & Emma Hindall, Ginny Eklund, Terry Veysey, and Sherri Quint.

To Adam and Lisa Arens, for their donation of a landscaping crew and materials to create a raised garden bed in the TBE courtyard; and for the donation of a hydrangea tree beside the courtyard steps to match the one donated for Rabbi Braun's garden.

To Debbie Kanter, Olivia Solodar and Sharon Craig, who also helped volunteer for the TBE Open House and Family Fun Day.

To the volunteers who helped continue the work on our landscaping projects on Wednesday, June 22: Barbara Dichter, Sharon Bresler, and Gregg Garson.

To Steve and Fran Blattner for their donation of a Dell laptop computer to Temple Beth El.

To Jodi and Terry Veysey for donating -- and planting! -- several vegetable plants for our new raised garden bed.

## Rabbi *continued from page 1*

notice our mental patterns and change them. Do you think of the worst-case scenario before the best case? Are you hypercritical of yourself and others? Scientists have found that it is difficult to experience happiness under those circumstances. Dr. Britton suggests that we think of the qualities of someone whom we admire, and then 'practice' those qualities. I think of qualities such as kindness, fairness, sound ethics, and being genuine. The people whom I admire, all seem to be genuinely happy, too.

And so, I want to wish each and every one of us a shanah tovah, a good new year filled with simcha (happiness) and simchas (happy occasions).

## Why *continued from page 4*

committees continue to work hard to offer programming that meets the diverse desires of our community. TBE is happy to be able to continue to partner with the other Jewish organizations in the Portland area to maximize the resources that we all bring to the table. We also want to welcome Rabbi Jared Saks to Congregation Bet Ha'am, and we look forward to all that he will bring to the community.

The United Synagogue of Conservative Judaism, representing all Conservative Congregations has suggested a new way to think about the synagogue. They have asked that we understand ourselves as a kehilla, a

spiritual community. My experience here has told me that we are a kehilla, a synagogue, whose primary task is to offer experiences that help us connect to one another, to the community at large, and, to the Divine. We've learned from history and from our Tradition, that we can't do this alone; survival means that we must do this as a community -- we must trust and depend on each other. I look forward to this upcoming year of growth and strength. I hope your summer has been restful and enjoyable and that you are ready to roll up your sleeves and participate!



TEMPLE BETH EL

# 2011 HIGH HOLIDAYS 5772

## SPECIAL INSERT

### PRESIDENT'S MESSAGE

by Judy Gatchell

#### *L'Shanah Tova!*

We have reached the month of Elul, our official preparation for the High Holy Days. This means that Temple Beth El staff and volunteers are busy working to make this the most pleasant and fulfilling time we can for all who attend. **Please note**, tickets for services on Rosh Hashanah and Yom Kippur will be mailed at the beginning of September.

**Please be sure to bring your tickets with you when you come to services.** Greeters and ushers from our Board will be available to welcome you and provide assistance. If you should forget your ticket, please see our office staff.

This year we will once again be treated to the wonderful voice of our Director of Congregational Learning Ba'al Tefillah, Dov Goldberg, who will lead us in services in the main sanctuary. Please check the schedule for the many opportunities for prayer and learning for members of all ages beginning with the musical Selichot service on Saturday evening September 24, and on both days of Rosh Hashanah and on Yom Kippur. As always, we will be offering youth services and programming, as well as childcare for children ages 1 through 12 from 8:30 a.m. to 12:30 p.m on each of the High Holy Days. Please RSVP to the Temple office by Friday, Sept. 23 if you need childcare.

Your support through membership at TBE, along with your generosity during our Annual Appeal and other fundraising initiatives, allows our community to flourish as we continue to provide programming that meets our congregation's spiritual and educational needs, and to maintain our physical structure.

I close by reminding you that the holiday season continues with Sukkot and Simchat Torah. Please check the schedule of services and events and join us for these joyful occasions.

May you and your family enjoy a sweet, peaceful and fulfilling New Year.

*B'shalom,*

**Judy Gatchell, President**

# MESSAGE FROM TBE'S RITUAL COMMITTEE

by Barbara Dichter

September 2011

Elul 5772

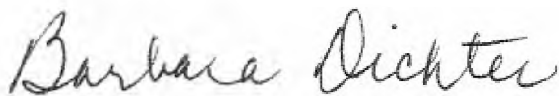
Dear Friends,

On behalf of Temple Beth El's Ritual Committee, I welcome you to High Holiday services. We are excited to have so many members participating. I want to recognize Debbie Kanter, Hedy Cohen, Barbara Epstein and Dov Goldberg for their hard work and dedication over the summer months assigning honors, as well as Rabbi Braun and the other members of the Ritual Committee who have helped to create an environment where all may have a meaningful High Holiday experience.

The Ritual Committee would like to share some recommendations and reminders that we hope will contribute to making our services meaningful for all:

- Upon entering the Temple grounds, please turn off all pagers and cell phones.
- We are happy to welcome you throughout the services. If you wish to reserve seats for family or friends, please arrive by 9:30 am. After that time, you may no longer reserve seats.
- When the service is in progress, please be mindful of those around you and keep your conversations as quiet as possible. Should you need to exit or enter the sanctuary, please wait until the Ark is closed. The ushers may ask you to remain inside or outside until the appropriate moment.
- We ask that all males wear a *kippah* (yarmulke) while on the Temple grounds.
- Children are always welcome at services; we only ask that you respect the sanctity of the service and the feelings of other congregants by taking children out if they become too restless. **For safety sake, please remind your children not to run in the building or slide down the banister.**
- If you have an honor, please check in with an usher when you arrive. We ask that all males and females receiving an honor wear a *kippah* (or headcovering). For honors involving the Torah (*aliyyot*, *hagbah*, *gelilah*, Ark openings, etc.), we also ask that you wear a *tallit*.
- For honors on the *bimah*, please come up to the *bimah* on the Cantor's side and exit the *bimah* on the Rabbi's side.
- We want everyone to feel comfortable participating with us. If you have any accessibility needs, please contact our Administrative Director, Jodi Veysey, at 774-2649.

May this be a year of peace and health for all.



Barbara Dichter  
Ritual Committee Chair



# HIGH HOLIDAY NEEDS

## **HIGH HOLIDAY SPONSORS NEEDED**

Many of the extra touches that make the High Holidays more accessible and enjoyable to everyone in our Congregation are the result of High Holiday sponsors. These generous members help us spruce up for the High Holidays and allow us to celebrate with comfort and ease. Thank you to those who have already agreed to sponsor various aspects of the Holiday Services. We are still looking for sponsors for the following: Mums from the entrances, Childcare, Children's Services, Advertisement, Security, Printing and Mailings, Kitchen Cleaning and more. If you are interested in becoming a High Holiday Sponsor, please contact Jodi Veysey at 774-2649 or [director@tbemaine.org](mailto:director@tbemaine.org).

## **HIGH HOLIDAY USHERS NEEDED**

Please contact Adam Arens at [adam.arenas@gmail.com](mailto:adam.arenas@gmail.com) if you would be willing to help with an hour (or more) of Ushering or Greeting for the High Holidays.

## **CAKE BAKERS NEEDED FOR ROSH HASHANAH ONEG**

Arlene Schwartz is coordinating cake baking again this year and is looking for volunteers who are interested in baking honey cakes for the Rosh Hashanah Day 2 oneg. If you are interested in participating, please call the office at 774-2649 and we'll pass your interest on to Arlene.

## **WECOMING GUESTS FOR THE HOLIDAYS**

Each year we receive a number of requests from those hoping to find a family with which to celebrate the High Holidays. If you and your family have room at your High Holiday table for an extra guest from the community, or if you or someone you know needs a place to be, please let the office know as soon as possible so that we may match people to homes.

## **ANNUAL HIGH HOLIDAY FOOD DRIVE**

The Temple Beth El Sisterhood invites all Temple members to participate in the Annual High Holiday Food Drive. Please fill a shopping bag with nonperishable, unopened food items and personal products and bring it with you to Kol Nidre Services, or place the bags in the designated area anytime after Yom Kippur. It is important to check the expiration date on all food items. ***For a list of needed items please contact the Temple.*** The food and personal items will then be distributed to Jewish Family Services and Project FEED. Please note that this appeal is separate from the ongoing monthly food drive.

You can also help by donating the dollars you would have spent to feed yourself and your family on Yom Kippur. Please make your check payable to TBE Sisterhood Food Drive and drop it off at the Temple office or mail it to: TBE Sisterhood, 400 Deering Ave., Portland ME 04103.

# HIGH HOLIDAY NEWS & NOTES

## SERVICE TIMES

**Morning services in the Main Sanctuary** will begin at 8:30am.

**Kol Yeladim** begins at 10:00 am in the classrooms and is appropriate for children 0-5 and their parents.

**Kids Kehillah** begins at 10:00 am in various classrooms and is appropriate for children in grades K - 7.

**Grades 8 – 12** will attend the sermon beginning at 10:45 am and meet at 11:15 am for a follow-up discussion.

Please look for signs posted in the School Wing to find your child's appropriate room.

## CHILD CARE AVAILABLE DURING HIGH HOLIDAY SERVICES

We will again be offering childcare from **8:30 am to 12:30 pm on both days of Rosh Hashanah and on Yom Kippur morning**. Childcare will be for children ages 1 through 12, with possible room for limited care of children under 1 year. To assure a spot for your child, you must call the Temple by **Friday, September 23rd**. All children need an advance reservation so that the appropriate number of babysitters are available.

## PARKING

The Portland Center For Assisted Living on Devonshire Street is available to us again this year.

Parking will be reserved only for those members who are 70+ or disabled.

We will have use of just the **25 perimeter spaces** (this *excludes* the spaces that are along the edge of the parking lot that are closest to their building).

**In order to maintain this arrangement we must use only those spaces offered to us. When using the parking spaces at the Center, please only park in marked spaces; do not park on the grass or in areas of the lot that are not designated for parking, as this can inhibit ambulance access.**

When parking on the street, please help us to maintain good relationships with our neighbors by noting that ***parking within 5 feet of a driveway, hydrant, or crosswalk is prohibited***. Please observe all NO PARKING signs.

During the High Holidays, parking is permitted on both sides of Deering and Devonshire Streets and on the ***Temple side only of Wadsworth Street***. A space on Devonshire St. will be open to allow curb-side drop-off for those needing an easily accessible entrance into the sanctuary through the side door.

## KEVER AVOT CEMETERY VISITS

It is customary to visit the graves of parents and other close relatives in the month of Elul. The prayers of the Days of Awe are filled with imagery of who shall live and die, and the hope is that a visit to the cemetery during this period of self examination, to touch base, so to speak, with the lives and influence of those who have gone before us will be enlightening and inspiring. It is also a time to share stories and recall the good qualities and mitzvot of departed family members.

Please join us on Sunday, September 25th beginning at 10:00 am at Mt. Sinai, followed by TBE Memorial Park at 11:30 am.

## ANNUAL APPEAL

This year, we're extending the time frame of the Annual Appeal by commencing at the start of our fiscal year and running all year long. We've also added fun events throughout the year to provide additional opportunities for participation. Your Annual Appeal card will be mailed to you prior to the High Holidays and will also be available for you to pick up at services and make your pledge. Won't you please give generously? It's not about how much you give, it's that you give. Our goal is to receive a gift from every member of the TBE family. Your much needed support is deeply appreciated!

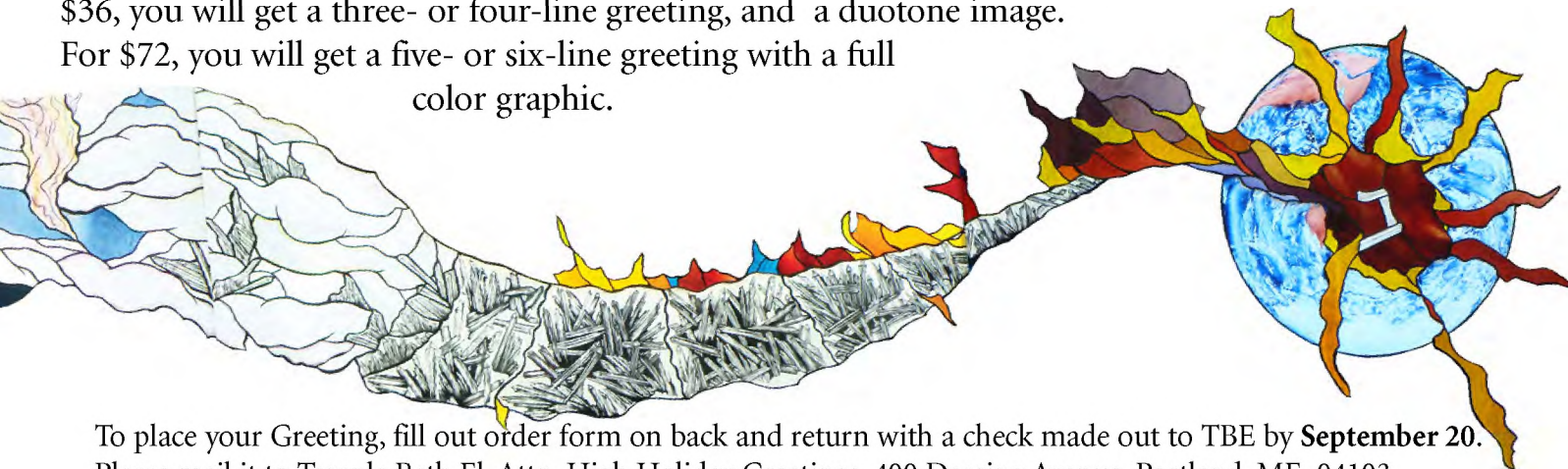
2011 • Temple Beth El • 5772  
*L'Shanah Tovah Greetings*

Join us again this year, as members of our TBE Family have an opportunity to express New Year's Greetings in a special way — by purchasing a personalized message to affix to the TBE Creation Poster, which will be visible for all to see in a prominent display this High Holiday Season. This is a wonderful way to share the warmth and sweetness of the New Year, as well as support our Temple.

Each greeting will include a graphic detail from our stained glass windows, further enhancing and beautifying the season.

A one- or two-line greeting costs \$18 (Chai) and includes a black and white image. For \$36, you will get a three- or four-line greeting, and a duotone image.

For \$72, you will get a five- or six-line greeting with a full color graphic.



To place your Greeting, fill out order form on back and return with a check made out to TBE by **September 20**. Please mail it to Temple Beth El, Attn. High Holiday Greetings, 400 Deering Avenue, Portland, ME 04103.



**Deluxe  
LULAV & ETROG  
Set - \$37**

**Place your order  
through the  
TBE Office  
by Friday,  
September 16<sup>th</sup>.**

*Shake things up with a*

## **LULAV & ETROG SET**

'And you shall take...the fruit of the Hadar tree (i.e. *etrog*), branches of the palm tree (i.e. *lulav*), boughs of leafy trees (i.e. myrtle), and willows of the brook, and you shall REJOICE before the Lord your God seven days.'

*— Leviticus 23:40*

**Order your Lulav & Etrog set for Sukkot, for the  
holiday ritual of the daily blessing and waving the  
of the Lulav and Etrog.**

Each deluxe set comes assembled with the Lulav, Haddasim (myrtle) and Aravot (willow) in a holder, and the Etrog (citron) in its own box. The set includes a guide with blessings and customs for using the Lulav and Etrog.

***See reverse for Order Form >>***

1

Name \_\_\_\_\_

Phone \_\_\_\_\_

E-mail \_\_\_\_\_

2

Check enclosed for the following amount:

☐ \$18 (up to **2 total** lines)☐ \$36 (up to **4 total** lines)☐ \$72 (up to **6 total** lines)☐ Other \$ \_\_\_\_\_

3

Select one of the Greetings (large characters)  
or write your own.

Large Characters (up to 18 letters and spaces per line)

☐ Happy Holidays [1 line]☐ A Year of Sweetness [1 line]☐ May you be inscribed  
in the Book of Life [3 lines]☐ Happy Rosh HaShanah [2 lines]☐ L'Shanah Tovah [1 line]☐ Other  
Message

|  |  |  |  |  |  |  |  |  |  |  |  |  |  |  |  |  |  |
|--|--|--|--|--|--|--|--|--|--|--|--|--|--|--|--|--|--|
|  |  |  |  |  |  |  |  |  |  |  |  |  |  |  |  |  |  |
|  |  |  |  |  |  |  |  |  |  |  |  |  |  |  |  |  |  |
|  |  |  |  |  |  |  |  |  |  |  |  |  |  |  |  |  |  |

[1 line]

[2 lines]

[3 lines]

4

List family member name(s) as it should appear in the greeting.

Small Characters

(up to 24 letters and  
spaces per line)

|  |  |  |  |  |  |  |  |  |  |  |  |  |  |  |  |  |  |
|--|--|--|--|--|--|--|--|--|--|--|--|--|--|--|--|--|--|
|  |  |  |  |  |  |  |  |  |  |  |  |  |  |  |  |  |  |
|  |  |  |  |  |  |  |  |  |  |  |  |  |  |  |  |  |  |
|  |  |  |  |  |  |  |  |  |  |  |  |  |  |  |  |  |  |

[1 line]

[2 lines]

[3 lines]



# LULAV & ETROG SET ORDER FORM

**Return this form to the TBE Office by Friday, September 16<sup>th</sup>.**Lulav and Etrog sets will be available for pickup in the TBE office beginning Fri., Oct. 10  
or at our Sukkot 'Pizza in the Hut' gathering on Wed., Oct. 12 at 5:00 pm.

Name: \_\_\_\_\_

Address: \_\_\_\_\_

Number of sets @ \$37 each: \_\_\_\_\_ TOTAL: \$ \_\_\_\_\_

Telephone number: \_\_\_\_\_

Email: \_\_\_\_\_

☐ Check enclosed. (Please make checks payable to Temple Beth El.)☐ Credit card (circle one): Visa    Mastercard

Credit card number: \_\_\_\_\_

Expiration date: \_\_\_\_\_





## TEMPLE BETH EL SISTERHOOD

*Invites all TBE members to participate in the*

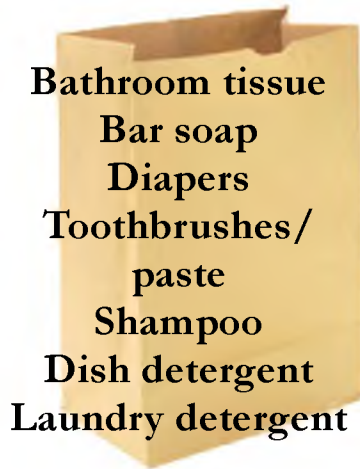


# ANNUAL HIGH HOLIDAY FOOD DRIVE

Please fill a shopping bag with non-perishable, unopened food items and personal products, and bring it with you to Kol Nidre services, or place the bag in the designated area any time after Yom Kippur. It is important to check the expiration date on all food items. The food and personal items will be distributed to Jewish Family Services and Project Feed. Please note that this appeal is separate from the monthly food drive to benefit Preble Street Resource Center.



Canned fruit  
Canned vegetables  
Canned soup  
Spaghetti sauce  
Canned tuna  
Mayonnaise



Bathroom tissue  
Bar soap  
Diapers  
Toothbrushes/  
paste  
Shampoo  
Dish detergent  
Laundry detergent



Peanut butter  
Jams & jellies  
Pancake mixes  
Syrup  
Cereal  
Muffin mixes  
Baby food

You can also help by donating funds. Please make your check payable to TBE Sisterhood Food Drive and either drop it off or mail it to: Temple Beth El Sisterhood, 400 Deering Ave., Portland, ME 04103.

Deepen the meaning of your Yom Kippur fast, and help end the involuntary fast of those in need in our community. *Thank you.*



TEMPLE BETH EL

# HIGH HOLIDAYS SERVICES SCHEDULE5772 / 2011

#### Saturday, Sept. 24

7:30 pm Musical *Selichot* Service

#### Sunday, Sept. 25

*Kever Avot* Annual Cemetery Visits:

10:00 am Mt. Sinai Cemetery, Hicks St., Portland

11:30 am TBE Memorial Park,  
outer Congress St. & Johnson Rd., Portland

#### Wednesday, Sept. 28 - Erev Rosh Hashanah

6:10 pm Candle lighting time

7:30 pm Ma'ariv (Evening Service)

#### Thursday, Sept. 29 - Rosh Hashanah I

##### **Main Sanctuary:**

8:30 am Shacharit (Morning Service)

9:20 am (approx.) Torah Reading

10:45 am (approx.) Sermon

11:15 am (approx.) Musaf

##### **Kol Yeladim (ages 5 and under):**

10:00 - 10:45 am Rooms 1A & 1B

##### **Kids Kehillah:**

Grades K-2 – Room 5 10:00 – 10:45 am

Grades 3-5 – Room 4 10:00 – 11:00 am

Grades 6-7 – Room 2 10:00 – 11:30 am

Grades 8-12 10:45 am – Attend Sermon  
11:15 am – Follow-up Discussion

6:15 pm Tashlich & Mincha Service  
Back Cove, Dartmouth St. & Baxter Blvd.

7:16 pm Candle lighting time

7:30 pm Ma'ariv (Evening Service)

#### Friday, Sept. 30 - Rosh Hashanah II

##### **Main Sanctuary:**

8:30 am Shacharit (Morning Service)

9:20 am (approx.) Torah Reading

10:45 am (approx.) Sermon

11:15 am (approx.) Musaf

##### **Kol Yeladim (ages 5 and under) & Kids Kehillah:**

*See schedule for first day of Rosh Hashanah (above)*

5:30 pm Shabbat Ma'ariv (Evening Service)

6:07 pm Shabbat candle lighting time

#### Friday, Oct. 7 - Erev Yom Kippur

5:45 pm Kol Nidre Service

5:54 pm Shabbat & Holiday Candle Lighting

#### Saturday, Oct. 8 - Yom Kippur

##### **Main Sanctuary:**

8:30 am Shacharit (Morning Service)

9:20 am (approx.) Torah Reading

10:45 am (approx.) Sermon

11:15 am (approx.) Musaf

##### **Kol Yeladim (ages 5 and under):**

10:00 - 10:45 am Rooms 1A & 1B

##### **Kids Kehillah:**

Grades K-2 – Room 5 10:00 – 10:45 am

Grades 3-5 – Room 4 10:00 – 11:00 am

Grades 6-7 – Room 2 10:00 – 11:30 am

Grades 8-12 10:45 am – Attend Sermon

11:15 am – Follow-up Discussion

3:00 pm Adult Limud (Study Session)

4:15 pm Yizkor

4:45 pm Mincha (Afternoon Service)

5:45 pm Ne'ilah Service

6:40 pm Ma'ariv (Evening Service), Havdalah

7:00 pm Fast Ends, Shofar Blowing

TBE Break-the-Fast with Rabbi Braun

#### Wednesday, Oct. 12 - Erev Sukkot

5:00 pm 'Pizza in the Hut' at TBE

5:45 pm Candle lighting time

#### Thursday, Oct. 13 - Sukkot I

9:30 am Shacharit (Morning Service)  
followed by lunch in the Sukkah

6:52 pm Candle lighting time

#### Friday, Oct. 14 - Sukkot II

9:30 am Shacharit (Morning Service)

5:30 pm Kabbalat Shabbat Services

5:42 pm Shabbat candle lighting time

#### Wednesday, Oct. 19 - Erev Shemini Atzeret

5:00 pm Holiday Services

5:34 pm Candle lighting time

#### Thursday, Oct. 20 - Shemini Atzeret

9:30 am Shacharit (Morning Service)

11:15 am (approx.) Yizkor

6:30 pm Simchat Torah Service

6:40 pm Candle lighting time

#### Friday, Oct. 21 - Simchat Torah

9:30 am Shacharit (Morning Service)

5:30 pm Kabbalat Shabbat Service

5:31 pm Shabbat candle lighting time

# SHANA TOVA



Wishing you  
a good & sweet  
New Year!

~ from your TBE family

## KOL YELADIM

With the days getting warmer and brighter, we celebrated Spring and Passover on April 10 with crafts, cooking (everyone got to make a bowl of Charoset), and a Chametz Hunt! We braved the not so Spring-like temperatures on Lag B'Omer for an outdoor celebration of Israel and kibbutz life at Wolfe's Neck Farm in Freeport. Six families participated in the outing to visit the animals, observe the 5-day old chicks and ducklings, go on a "hike" and have a picnic lunch.

Involvement in Kol Yeladim programming has been growing and a core group of participants can be found at our monthly events, with new and returning faces always welcome. Kol Yeladim programs are open to all members of the Greater Portland Jewish community, with activities geared for children ages 0-5. At each event we celebrate and learn about our religion, culture, and traditions, with an emphasis on fun and making new friends!

I hope to see you at our upcoming events! For questions about the program, to volunteer, or offer suggestions for upcoming events, please contact Talia Timmins at 233-6449 or [kolyeladim@tbemaine.org](mailto:kolyeladim@tbemaine.org).

## TBE Volunteer Tom Berman Honored at the USCJ Alan Karlsberg Tzedek Awards Luncheon

Temple Beth El member Tom Berman was recognized with a New England Area United Synagogue of Conservative Judaism (USCJ) Tzedek Award. The award was presented at the Alan Karlsberg Tzedek Awards Luncheon at Temple Reyim in Newton, MA, on Sunday, May 1st. Over 200 people attended the event, including honoree Tom Berman and his wife Margie, their daughter Lisa and the extended Berman family, Rabbi Braun, Director of Congregational Learning Dov Goldberg, TBE Board President Judy Gatchell, and TBE members Becky DeLois and Clara Purinton, and paid tribute to the many volunteers in their synagogues who, in the model of the late Alan Karlsberg, a past president of the New England region, give of themselves without seeking recognition to maintain and strengthen their congregations. Tom was nominated in acknowledgment of his continued devotion and commitment to Temple Beth El in Portland.

Tom is the chairperson of Temple Beth El's Technology Committee and handles all of the responsibilities of an in-house IT staff person on a volunteer basis, with diligence and success.



He also spent countless hours working with a web design company on creating the design, and learning the programming of Temple Beth El's new website and eventually maintaining the necessary changes and updates to the site. Tom also serves on Temple Beth El's House Committee, and assists with building repairs, landscaping and shoveling snow. He is a go-to person and is deeply valued and appreciated by the Temple Beth El community. Mazel tov, and todah rabah, Tom!

## Brotherhood *from page 3*

is threatened by dwindling numbers during the winter season when many people are away.

You can donate to Brotherhood in several ways, either through an \$18 dues contribution, and/or by donating at least one day a week to attending the morning minyan service. Giving at least one day a week to attending the service is just as meaningful an investment as the dues and we ask that you consider committing yourself in this fashion.

Brotherhood dues forms and other information can be found on the table in Temple Beth El's front lobby.



*In Eternal Memory*  
לזכר עולם

### TEMPLE BETH EL YAHRZEIT MEMORIAL BOARD CAMPAIGN

In the past few years, the six boards that currently adorn our walls have become almost filled to capacity as families have purchased plaques to honor a loved one who has passed.

Our goal is to raise over \$14,000 to purchase a much-needed new board. Please consider any pledge amount that you can give, so that we may continue to offer a place of remembrance for generations to come.

Please contact our TBE Director, Jodi Veysey at 774-2649 or [director@tbemaine.org](mailto:director@tbemaine.org), to discuss a pledge amount or if you have any questions.

— Over \$2,000 raised so far —

# DONATIONS TO TEMPLE FUNDS

We are grateful for the following gifts to our Temple Funds. Donations not designated for specific funds will be placed in the General Fund.

Donations to a Temple Fund provide a wonderful opportunity to remember loved ones, honor friends and family and continue to bring strength to our Temple Beth El community. We encourage your donations and welcome your thoughtfulness.

## Brotherhood

Loralee Levin, in Honor of Isaac Finberg's Bar Mitzvah  
Michael Kaplan, in Memory of Donald Kaplan  
Phil and Elizabeth Levinsky, in Memory of Hyman Zaitlin  
Phil and Elizabeth Levinsky, in Memory of Ruth Zaitlin  
Phil and Elizabeth Levinsky, in Memory of Sally Lourie Sneider  
Phil and Elizabeth Levinsky, in Memory of Stephen Romanow  
Phil and Elizabeth Levinsky, in Memory of Mary Davidson  
Phil and Elizabeth Levinsky, in Memory of Joe Chandler

## Dov Goldberg Discretionary Fund

Charlie and Ellie Miller, in Honor of Amiel Goldberg's College Graduation  
Mickey Haas, Jr. and Sheryl Haas, in Honor of Dov Goldberg for his help in preparing Jacob for his Bar Mitzvah and for making his day special!

## Edward Weisberg Fund

Joan and Arthur Cope, in Honor of Andrea Levinsky's high school graduation  
Paul and Patricia Cutler, in Honor of Rita Weisberg's Birthday  
Rita Weisberg, in Honor of Rebecca Silver's HS graduation and being named a National Merit Scholar  
Rita Weisberg, in Honor of Jason Cope's college graduation  
Rita Weisberg, in Honor of Danny Echt's college graduation  
Rita Weisberg, in Honor of Andrea Levinsky's high school graduation  
Rita Weisberg, in Honor of Tom Berman's wonderful volunteer work  
Alan and Karen Lerman, in Memory of Lillian Stiman Lerman  
David and Myra Finkelstein, in Memory of Jack and Sarah Finklestein  
Helen Isenman and Susan Isenman, in Memory of Mary Davidson  
Joan and Arthur Cope, in Memory of Stephen Romanow  
Joan and Arthur Cope, in Memory of Sally Lourie Sneider  
Rita Weisberg, in Memory of Dianne Schwey Richman  
Rita Weisberg, in Memory of Stephen Romanow

Rita Weisberg, in Memory of Rose Weisberg Kaplan  
Abe Benjamin, in Memory of Stephen Romanow  
Alan and Karen Lerman, in Memory of Harvey Weinstein  
Alan and Karen Lerman and Family, in Memory of Stephen Romanow  
Gerald and Selma Cope, in Memory of Sally Lourie Sneider  
Anne Spiegel, Speedy Recovery to Murray Rosen  
Helen Isenman and Susan Isenman, Speedy Recovery to Murray Rosen  
Rita Weisberg, Speedy Recovery to Jeannette Lourie  
Fred and Ruth Miller, in Memory of Ada Tapper  
Fred and Ruth Miller, in Memory of Harry Miller  
Joan and Arthur Cope, in Memory of Joe Chandler  
Rita Weisberg, in Memory of Joe Chandler

## Endowment

Steve and Chichi Levine, in Honor of Rabbi Braun's care and concern  
Charlie and Ellie Miller, in Memory of Bernard D. Miller  
Stu and Carol Gilbert, in Memory of Anna Stillman  
Stu and Carol Gilbert, in Memory of Evelyn Wincelev

## General Fund

Arthur and Fran Jacobson with grateful appreciation for thinking of them at Purim time.  
Mark and Stefanie Gill  
Abe and Tama Fineberg, in Honor of Harriette Small's 90th Birthday  
Charlie and Ellie Miller, in Honor of Desi Isaacson becoming a Bar Mitzvah  
Charlie and Ellie Miller, in Honor of Tom Berman's recognition at the 2011 Tzedek Award Luncheon  
Charlie and Ellie Miller, in Honor of Jacob Haas becoming a Bar Mitzvah  
Ernest and Diana Sturman, in Honor of Harriette Small's 90th Birthday  
Ernest and Diana Sturman, in Honor of Murray & Shirley Rosen's 55th Anniversary  
Harold Millman and Miriam Remar-Millman, in Honor of Stanley Wilner's 80th Birthday  
John and Linda Haas, in Honor of the Bar Mitzvah of Jacob Haas. We remember his great grandparents, Betsy & Milton Haas and Mary & Philip Moonves.  
Murray and Shirley Rosen, in Honor of Tom Berman's nomination for the Tzedek Award  
Natalie Brenner, in Honor of appreciation of the Purim Basket  
Stanley and Annabelle Pilitch, in Honor of Laura Pilitch  
Alan and Elaine Fink, in Memory of Blanche Fink  
Barbara and Robert Goldfarb, in Memory of George Wolf  
Barbara Hugo, in Memory of Mary Hugo  
Charlie and Ellie Miller, in Memory of Anne Berman & in Honor of the birth of new granddaughter  
Charlie and Ellie Miller, in Honor of the birth of Harvey and Sara Berman's new granddaughter  
Dauna Binder, in Memory of Henry J. Binder  
Dave Astor, in Memory of Max Astor  
David and Barbara Turitz, in Memory of Anna Turitz  
David and Elaine Lewis, in Memory of Jennie Weisberg

David and Elaine Lewis, in Memory of George I. Lewis

David and Elaine Lewis, in Memory of Paul Lewis  
David and Elaine Lewis, in Memory of Ida Dion  
David and Elaine Lewis, in Memory of Harry Weisberg  
David and Elaine Lewis, in Memory of Bernard Lewis  
Dr. Sara Cope, in Memory of her beloved husband, Samuel Cope  
Elliott and Ellen Lerman, in Memory of Syd Lerman  
Gil and Marilyn Praver, in Memory of Sam Praver  
Harold Millman, in Memory of Barbara Z. Millman  
Harold Millman, in Memory of Frieda Millman  
Harold Millman and Miriam Remar-Millman, in Memory of Barbara Kalman  
Harold Millman and Miriam Remar-Millman, in Memory of Frances Berkowitz  
Helen Isenman and Susan Isenman, in Memory of Benjamin Levin  
Helen Isenman and Susan Isenman, in Memory of Abraham Isenman  
Janine Collins, in Memory of Marion Fusco  
Janine Collins, in Memory of Anthony Imondi  
Leonard and Anne Kovit, in Memory of Max Kovit  
Mrs. Miriam Remar-Millman, in Memory of Irving Remar  
Perla Kimball, in Memory of Paul Figa & Karola Holtzman Figa & their relatives who died in the Holocaust  
Sandie Antar, in Memory of Jack Novick  
Shirley Kazon, in Memory of Eva Kazon  
Steve and Cindy Lerman, in Memory of Richard Lerman  
Steve and Cindy Lerman, in Memory of Martin Sprince  
Steve and Cindy Lerman, in Memory of Samuel Lerman  
Abe and Tama Fineberg, in Memory of Sally Sneider  
Ben and Judy Bertram, in Memory of Mary Davidson  
Charlie and Ellie Miller, in Memory of Mary Davidson  
Charlie and Ellie Miller, in Memory of Stephen Levine  
Elaine Rosen, in Memory of Mary Davidson  
Gil and Barbara Dichter, in Memory of Mary Davidson  
Jon and Amy Brier, in Memory of Jim Marcus  
Paul and Susan Trusiani, in Memory of Sally Lourie Sneider  
Ray and JoAnn Oransky, in Memory of Mary Davidson  
Steve Alberg, in Memory of Jim Marcus  
Steve Alberg, in Memory of Mary Davidson  
Mr. Charles Miller, Speedy Recovery to Barbara Epstein  
Paul and Susan Trusiani, Speedy Recovery to Gussy Gottschalk  
Paul and Susan Trusiani, Speedy Recovery to John Gerber  
Paul and Susan Trusiani, Speedy Recovery to Murray Rosen  
David and Elizabeth Turesky  
Abe and Tama Fineberg, in Honor of Connie and Ronald Jacobson's 60th Anniversary  
Abe and Tama Fineberg, in Honor of Ronald Jacobson's birthday



Elissa Rosch and Robin Buxton, in Honor of Steve Gleit's birthday  
 Murray and Shirley Rosen, in Honor of Connie and Ronald Jacobson's 60th Anniversary  
 Murray and Shirley Rosen, in Honor of Ronald Jacobson's big birthday  
 Norm and Judy Wilson, in Honor of the birth of Harvey & Sara Berman's granddaughter  
 Bill and Vera Clenott, in Memory of Max Rosen  
 Bill and Vera Clenott, in Memory of Robert Clenott  
 David and Barbara Turitz, in Memory of Harry Turitz  
 Ellen Froncek & Jesse Froncek, in Memory of Tom Froncek  
 Janine Collins, in Memory of Anthony A. Imondi  
 Jerry Gillis, in Memory of Barbara Gillis  
 Larry and Wendy Kane, in Memory of Maurice Kane  
 Michael and Michelle Goldman, in Memory of Louis Dietz  
 Norm and Judy Wilson, in Memory of James Marcus  
 Norm and Judy Wilson, in Memory of Roberta Cavanaugh  
 Norm and Judy Wilson, in Memory of Anne Berman  
 Shirley Kazon, in Memory of Robert Slater  
 Stu and Carol Gilbert, in Memory of Marilyn Wolpert Worth  
 David and Elaine Lewis, in Memory of Joseph Chandler  
 David and Elaine Lewis, in Memory of Lillian Silverman  
 Esther Goldberg, in Memory of Joseph Chandler  
 Harriette Small, in Memory of Joe Chandler  
 Mrs. Helen Isenman, in Memory of Joseph Chandler  
 Mrs. Helen Isenman, in Memory of Lillian Silverman  
 Susan Isenman, in Memory of Joseph Chandler  
 Susan Isenman, in Memory of Lillian Silverman  
 Matt and Lynn Goldfarb, Speedy Recovery Stephen Levine

#### Hebrew School Contribution

Kathy Stairs  
 Mickey Haas, Jr. and Sheryl Haas, in Honor of Charlie & Ellie Miller for making Jacob's day even more special by being a part of his Bar Mitzvah Service!  
 Debbie Kanter, in Memory of Norman Bogg  
 Debbie Kanter, in Memory of Shirley Bogg  
 Debbie Kanter, in Memory of Mary Davidson  
 Debbie Kanter, Speedy Recovery to Murray Rosen  
 Debbie Kanter, Speedy Recovery to Barbara Epstein  
 Sharon Margolin, Speedy Recovery to Murray Rosen  
 David Freidenreich and Sara Kahn-Troster, in Honor of Dov Goldberg's marriage to Danielle  
 Murray and Shirley Rosen, in Honor of Dov & Danielle Goldberg's marriage  
 Debbie Kanter, in Memory of Jennie Levine

#### Jonas B Klein Fund

Phyllis Klein, in Memory of Stephen Romanow  
 James and Bonnie Klein, in Memory of Anna Stillman

#### Koocher/Robinov Fund

Ethel Koocher, in Memory of Adele Zern Dover  
 Jerry and Jackie Robinov, in Memory of Rachel Reimer  
 Scott and Alise Koocher, in Memory of David Koocher

Scott and Alise Koocher, in Memory of Nathan Koocher  
 Stan and Sherrie Schatz, in Memory of Joseph Schatz  
 Stan and Sherrie Schatz, in Memory of Ronnie Jaffe's father  
 Stan and Sherrie Schatz, in Memory of David Koocher  
 Stan and Sherrie Schatz, in Memory of Beatrice Schatz  
 Stan and Sherrie Schatz, in Memory of Adele Zern Dover  
 Ethel Koocher, in Memory of Anna Stillman  
 Stan and Sherrie Schatz, in Memory of Stephen Romanow  
 Stan and Sherrie Schatz, in Memory of Anna Stillman  
 Ethel Koocher, Speedy Recovery to Ina Weissman  
 Ethel Koocher, Speedy Recovery to Susan Neudel  
 Stan and Sherrie Schatz, Speedy Recovery to Steve Levine  
 Stan and Sherrie Schatz, Speedy Recovery to Susan Neudel  
 Stan and Sherrie Schatz, Speedy Recovery to Ina Weissman  
 Ethel Koocher, in Memory of Archie Waldman  
 Ethel Koocher, in Memory of Marilyn Koocher  
 Stan and Sherrie Schatz, in Memory of Marilyn Koocher  
 Stan and Sherrie Schatz, in Memory of David Silver

#### Kulanu Contribution

Dan and Phyllis Dunitz, in Memory of Samuel Shuman  
 Dan and Phyllis Dunitz, in Memory of Anna Shuman  
 David and Elaine Lewis, in Memory of Anna Stillman  
 David and Elaine Lewis, in Memory of Joseph D. Silverman  
 Harvey and Sara Berman, in Memory of Max Berman  
 Sam and Bette Novick, in Memory of Violet Stern  
 Jerry and Mary Carp, Speedy Recovery to Stephen Levine  
 Esther Goldberg, in Memory of Morris Morrison  
 John Riley and Carolyn Turcio-Gilman, in Memory of Ida Goldman

#### Lewis Prayer Book Fund

David and Elaine Lewis, in Memory of Blanche Weisberg  
 David and Elaine Lewis, in Memory of Minnie W. Lewis  
 David and Elaine Lewis, in Memory of Isaac Weisberg

#### Library Fund

Joan Locke, in Honor of Jacob S. Kelly's 1st Birthday

#### Memorial Park Contribution

Mark and May Crasnick, in Memory of Rachel Rose Crasnick  
 Pearl Levine, in Memory of Edith Bick  
 Pearl Levine, in Memory of Lena Kaufman  
 Rubin and Sally Laskoff, in Memory of Rachael Laskoff  
 Rubin and Sally Laskoff, in Memory of Samuel Rothblatt  
 Alvin Jolovitz, in Memory of Sylvia Jolovitz

## WE THANK OUR SPONSOR

CAROLYN  
TURCIO-GILMAN &  
JOHN RILEY

*Your donation of only \$18 per bi-monthly issue includes a one line listing with your name or business name in this column that honors our sponsors. To support our quarterly Shofar, contact the TBE bookkeeping office or donate on the TBE web site by selecting "Shofar Newsletter" from the list of funds.*

*Funds continued on page 18*

## Funds *continued from page 17*

Mark and May Crasnick, in Memory of David Crasnick

Minna Noone, in Memory of Gisela Davidson

Rubin and Sally Laskoff, in Memory of William Rothblatt

Wendy Coppersmith, in Memory of Anne Coppersmith

Wendy Coppersmith, in Memory of Abraham Coppersmith

Nancy Finberg, in Memory of Lillian Silverman

### Music Fund

Leah Cohen, in Memory of Alexander Kaatz

Morton and Esther Gold, in Memory of Cantor and Mrs. Leon Gold

Morton and Esther Gold, in Memory of Mrs. Bessie Gold

Mark and Norma Filler, Speedy Recovery to Steve Levine

Mark and Norma Filler, in Memory of Sylvia Leveille

### Rabbi's Discretionary Fund

Ellen Froncek

Michael and Hedy Cohen, in Honor of Natalie Cohen's graduation from University of Maine at Orono

Michael and Hedy Cohen, in Honor of the upcoming wedding of Dov Goldberg & Danielle Romanoff

Mickey Haas, Jr. and Sheryl Haas, in Honor of Rabbi Braun, in Honor of helping Jacob prepare for his Bar Mitzvah and for making his day special!

Cathy & Lloyd Gilgore, in Memory of Harvey Levine

Charlie Young, in Memory of Howard Young

Charlie Young, in Memory of Lawrence Young

Charlie Young, in Memory of Manuel Young

David and Beth Strassler, in Memory of Mary Davidson

Eliot Levine, in Memory of Harvey Levine

Harvey and Kathy Silverman, in Memory of Samuel Silverman

Helen Levine, in Memory of Harvey Levine

Jarrett & Erica Gilgore, in Memory of Harvey Levine

Jerry and Marilyn Sherry, in Memory of Jack Morin

Mark Lourie & Ava & Brien Bradley, in Memory of Sally Lourie Sneider

Steve and Peggy Shapiro, in Memory of William Shapiro

Ben and Judy Bertram, in Memory of Jim Marcus

Charlie Young, in Memory of Stephen Romanow

Emily and Stanley Chaleff, in Honor of Rabbi Braun and the naming of their son, Gideon Noah Chaleff

Gerald and Selma Cope, in Memory of Lillian Silverman

Rebecca Waxman-Sneed and Family, in Memory of Lillian Silverman

### Sisterhood

Matt and Lynn Goldfarb, in Honor of Ben Freedman's Bar Mitzvah

Charlie Young, in Memory of Lillian Silverman

Matt and Lynn Goldfarb, in Memory of Lillian Silverman

### Wilson Family Fund (Yad L'Yad)

Larry and Lisa Plotkin, in Memory of Arthur W. Naseck

Jon and Amy Brier, in Memory of Marilyn Wolpert Worth

Dan and Phyllis Dunitz, in appreciation for the meals from Yad L'Yad

### Yahrzeit Fund

Abe and Tama Fineberg, in Memory of Rose Mack Bickman

Amy Rolnick and John Williamson, in Memory of Ezra Barak Finberg

Barbara Berenson, in Memory of Harold Beckelman

Barbara Berenson, in Memory of Celia Berenson

Barbara Berenson, in Memory of Beverly Kalish

Bruce and Ellen Ruben, in Memory of Mary Kaplan

Bruce and Ellen Ruben, in Memory of Gladys Ruben

Burt and Barbara Epstein, in Memory of Doris Epstein

Charlotte Farber, in Memory of Lillian Lonstein

Charlotte Farber, in Memory of Alfred Max Zimmerman

Charlotte Farber, in Memory of Abraham Zimmerman

David and Janis Cohen, in Memory of Alexander & Bertha Cohen

Deborah Sabarra, in Memory of Beverly Kalish

Don and Ellen Ward, in Memory of Sidney Lerman

Dorothy and David Baker, in Memory of George Bress

Douglas and Gail Volk, in Memory of Charlotte Volk

Eddie Richman, in Memory of Morris Richman

Eddie Richman, in Memory of Dianne Schwey Richman

Edward and Martha Simensky, in Memory of Fay I. Simensky

Eric and Jackie Goldman, in Memory of Edward Goldman

Esther Goldberg, in Memory of Samuel Morrison

George and Ruthanne Singal, in Memory of Malka Singal

Harlan Baker, in Memory of Helen E. Baker

Harry and Florine Gorsky, in Memory of Robin Gorsky

Honey Goldman, in Memory of Israel Goldman

Honey Goldman, in Memory of Edward Goldman

Ivan and Sue Most, in Memory of Sylvia Lewenberg Sheinwald

Joel and Diana Gold, in Memory of Isadore Shane

Jon and Susan Young, in Memory of Howard Young

Joseph and Rhoda Wildstein, in Memory of Harold Wildstein

Marcelle Gorri van, in Memory of Armand Bohbot

Marilyn Sargent, in Memory of Gertrude Kravitz

Murray and Shirley Rosen, in Memory of Lena Binder

Murray and Shirley Rosen, in Memory of Nanette Binder

Murray and Shirley Rosen, in Memory of Sol Binder

Natalie Brenner, in Memory of Allan Goldstein

Natalie Brenner, in Memory of William Goldstein

Nora Ciffer, in Memory of Leon Ciffer

Nora Ciffer, in Memory of Freida Ciffer

Peter and Sandy Bennett, in Memory of Herbert Bennett

Robert and Ruth Finegold, in Memory of Flora Cahn

Roberta Fishman, in Memory of Daniel Brown

Ronald and Connie Jacobson, in Memory of Robert Jacobson

Ronald and Connie Jacobson, in Memory of Melvin Jacobson

Ronald and Connie Jacobson, in Memory of Sheldon Polansky

Ronald and Connie Jacobson, in Memory of Freida Jacobson

Ruth Abramson, in Memory of Samuel Nelson

Sam and Deb Barouch, in Memory of Nathan Barouch

Scott Black, in Memory of Louis & Selma Black

Sharon Bresler, in Memory of Larry Murinson

Sharon Bresler, in Memory of Bertha Murinson

Shirley Levine, in Memory of Annie Spector

Stephen and Lyndall Klein, in Memory of Isaiah Albair

Stephen and Lyndall Klein, in Memory of Maxine Young

Stephen and Lyndall Klein, in Memory of Sadel Klein

Stephen and Lyndall Klein, in Memory of William Klein

Stu and Carol Gilbert, in Memory of Morris Gilbert, MD

Stu and Carol Gilbert, in Memory of Sylvia Gilbert

Suzi Osher, in Memory of Dr. Alfred Osher

Thelma Cope, in Memory of Mitchell Cope

Zelda Zack, in Memory of Morris Zack

Andre and Daniela Skalina, in Memory of Rudolf Slezak

Bonnie Nelson, in Memory of Donald J. Nelson

Ellie Potter, in Memory of Newell L. Potter

Franziska Fritzsche-Jensen, in Memory of Peter M. Jensen

George and Ruthanne Singal, in Memory of Louis Singal

Helen Isenman and Susan Isenman, in Memory of Rebecca Rose Levin

Helen Isenman and Susan Isenman, in Memory of Molly Isenman

Honey Goldman, in Memory of Max Hechtkop

Morty and Dorothy Shulman, in Memory of Lillian Shulman

Murray and Shirley Rosen, in Memory of Joseph Binder

Roberta and John McMahon, in Memory of Newell L. Potter

Ruth Abramson, in Memory of Jules Abramson

Ruth Abramson, in Memory of Edith Nelson

Sam and Bette Novick, in Memory of Samuel Novick

Sam and Bette Novick, in Memory of Annie Novick

### Yahrzeit Board Fund

Alan and Karen Lerman

Abe Benjamin

Andre and Daniela Skalina

Nancy Finberg, in Memory of Norman "Buddy" Finberg

Charlie Young

Henni Polak

**Donations listed were received at Temple Beth El by August 1, 2011.**



# TEMPLE BETH EL

## CALENDAR

# SEPTEMBER – OCTOBER 2011

## SEPTEMBER

|   |  |
|---|--|
| <b>Friday, Sept. 2</b><br>5:30 pm   | Shabbat at the Sea Dogs:<br>Shabbat services, dinner<br>and game at Hadlock Field  |
| <b>Monday, Sept. 5</b><br><br>8:30 am   | <b>Labor Day</b><br>TBE OFFICE CLOSED<br>Morning Minyan  |
| <b>Sunday, Sept. 11</b><br>9:00 am  | FIRST DAY OF HEBREW SCHOOL<br>Hebrew School Family Program   |
| <b>Saturday, Sept. 24</b><br>7:30 pm  | Musical <i>Selichot</i> Service  |
| <b>Sunday, Sept. 25</b><br>10:00 am<br>11:30 am<br>5:00 pm                        | <i>Kever Avot</i> Cemetery Visits:<br>Mt. Sinai Cemetery<br>TBE Memorial Park<br>Tribute Dinner honoring Rabbi<br>Harry Sky – Marriot Sable Oaks   |
| <b>Wednesday, Sept. 28</b><br><br>6:10 pm<br>7:30 pm                              | <b>Erev Rosh Hashanah</b><br>NO HEBREW SCHOOL<br>Candle lighting time<br><i>Ma'ariv</i> (Evening) Service  |
| <b>Thursday, Sept. 29</b><br><br>8:30 am<br><br>6:15 pm<br><br>7:16 pm<br>7:30 pm | <b>Rosh Hashanah I</b><br>TBE OFFICE CLOSED<br><i>Shacharit</i> (Morning) Service*<br><b>*See reverse for complete schedule</b><br><i>Tashlich &amp; Mincha</i> Service at<br>Back Cove<br>Candle lighting time<br><i>Ma'ariv</i> Service at TBE |
| <b>Friday, Sept. 30</b><br><br>8:30 am<br><br>5:30 pm<br>6:07 pm                  | <b>Rosh Hashanah II</b><br>TBE OFFICE CLOSED<br><i>Shacharit</i> (Morning) Service*<br><b>*See reverse for complete schedule</b><br><i>Shabbat Ma'ariv</i> Service<br>Shabbat candle lighting time   |

## OCTOBER

|   |  |
|---|--|
| <b>Friday, Oct. 7</b><br><br>5:45 pm<br>5:54 pm                                   | <b>Erev Yom Kippur</b><br>TBE OFFICE CLOSING at 12:00 pm<br><i>Kol Nidre</i> Service<br>Shabbat & Holiday candle lighting<br>time                |
| <b>Sunday, Oct. 9</b>   | NO HEBREW SCHOOL   |
| <b>Wednesday, Oct. 12</b><br>5:00 pm<br>5:45 pm                                   | <b>Erev Sukkot</b><br>'Pizza in the Hut'<br>Candle lighting time   |
| <b>Thursday, Oct. 13</b><br><br>9:30 am<br>6:52 pm                                | <b>Sukkot I</b><br>TBE OFFICE CLOSED<br>Holiday services<br>Candle lighting time   |
| <b>Friday, Oct. 14</b><br><br>9:30 am<br>5:30 pm<br>5:42 pm                       | <b>Sukkot II</b><br>TBE OFFICE CLOSED<br>Holiday services<br>Kabbalat Shabbat Services<br>Shabbat Candle lighting time                           |
| <b>Wednesday, Oct. 19</b><br>5:00 pm<br>5:34 pm                                   | <b>Erev Shemini Atzeret</b><br>Holiday Services<br>Candle lighting time  |
| <b>Thursday, Oct. 20</b><br><br>9:30 am<br>Approx. 11:15 am<br>6:30 pm<br>6:40 pm | <b>Shemini Atzeret</b><br>TBE OFFICE CLOSED<br>Holiday Services<br><i>Yizkor</i> Service<br><i>Simchat Torah</i> Service<br>Candle lighting time |
| <b>Friday, Oct. 21</b><br><br>9:30 am<br>5:30 pm<br>5:31 pm                       | <b>Simchat Torah</b><br>TBE OFFICE CLOSED<br>Holiday Services<br>Kabbalat Shabbat Service<br>Shabbat candle lighting time                        |

*Dates and events are subject to change. Please see our website and email announcements for the latest info.*

TEMPLE BETH EL 400 Deering Avenue, Portland, ME 04103 (207) 774-2649 [www.tbemaine.org](http://www.tbemaine.org)



TEMPLE BETH EL

400 Deering Avenue  
Portland, ME 04103

ADDRESS SERVICE REQUESTED

PRSRTR-STD  
U.S. Postage

Paid

Permit No. 1404  
Portland, ME

## PORTLAND CHEVRA KADISHA



*In time of need,  
one Jew caring  
for another*

### JEWISH FUNERAL HOME

PreArrangement Counseling

471 Deering Avenue  
Portland, ME 04103

207•774•3733

## Promote your Business. Support our Temple.

**We Thank Our Supporters:** \$18 per quarterly issue includes a one line listing with your name or business name in a dedicated column honoring our sponsors.

**Business Card Ad:** \$180 per quarter.

**Best Deal □ Shofar and Web:** \$720 per year includes business card in our Members Business Directory on the Web Site (a \$120 value)

**Members Business Directory:** \$120 per year

**Web Sponsor:** \$180 per quarter, logo on the front page with link

**Weekly TBE-mail Sponsor:** \$18/wk, or \$72/mo, includes logo and link.

**Contact Jodi Veysey today at**  
**207-774-2649 or**  
**director@tbemaine.org**

Shofar Deadlines — November — December 2011 issue is September 15.

Please submit material via e-mail as text included in the body of the message or as an attached Microsoft Word document to [office@tbemaine.org](mailto:office@tbemaine.org). Submissions on paper will also be accepted.